

Technical sheet :

# 280 TJ

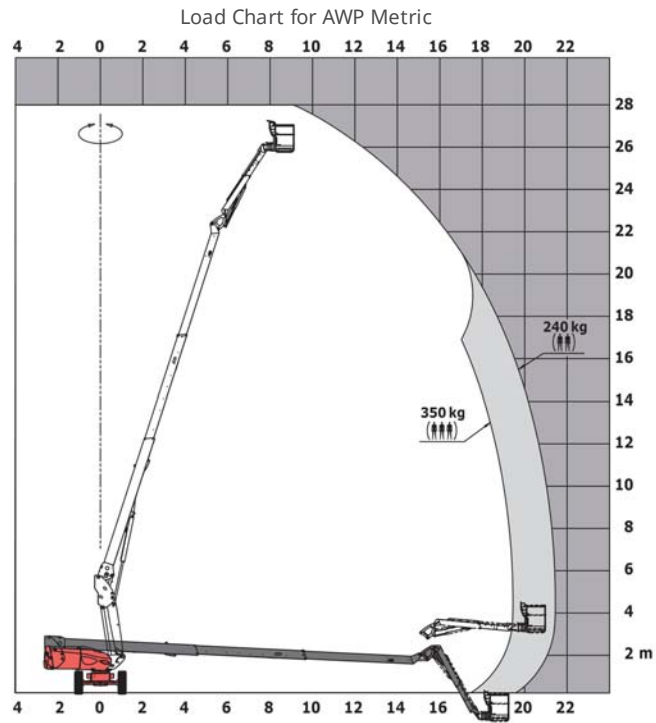
---



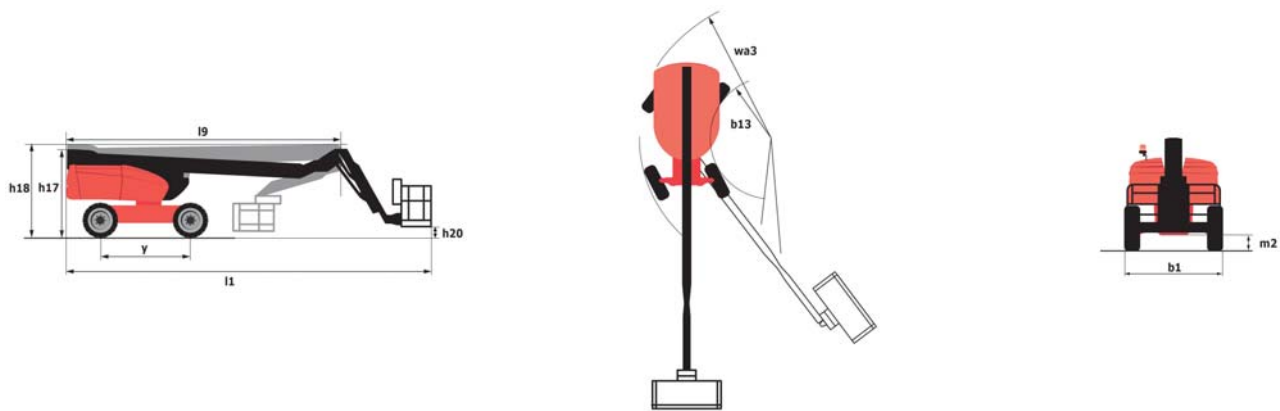
Capacities		Metric
Working height	h21	27.75 m
Platform height	h7	25.75 m
Max. outreach	r1	21.45 m
Pendular arm rotation (bottom)		+/-62 °
Platform capacity	Q	350 kg
Turret rotation		360 °
Platform rotation (right / left)		90 ° / 90 °
Number of people (inside / outside)		3 / 2
Weight and dimensions		
Platform weight*		16550 kg
Platform dimensions (length x width)	lp / ep	2.3 m x 0.9 m
Overall width	b1	2.48 m
Overall length	l1	11.36 m
Overall height	h17	2.73 m
Overall length (stowed)	l9	8.09 m
Overall height (stowed)	h18	2.71 m
Floor height (access)	h20	0.48 m
Counterweight offset (turret at 90°)	a7	1.42 m
Internal turning radius (over tyres)	b13	1.75 m
External turning radius	Wa3	7.24 m
Ground clearance at centre of wheelbase	m2	0.41 m
Wheelbase	y	2.8 m
Performances		
Drive speed - stowed		4.7 km/h
Drive speed - raised		0.8 km/h
Gradeability		34.5 %
Permissible leveling		4 °
Wheels		
Tyres type		Solid Tyres Cured-On
Drive wheels (front / rear)		2 / 2
Steering wheels (front / rear)		2 / 2
Braking wheels (front / rear)		2 / 2
Engine/Battery		
Engine brand / model		Kubota - V2403-M
Engine norm		Stage III A
I.C. Engine power rating / Power (kW)		46 Hp / 34.1 kW
Miscellaneous		
Ground Pressure		22.25 daN/cm <sup>2</sup>
Hydraulic Pressure		250 Bar
Hydraulic tank capacity		94 l
Fuel tank		72 l
Vibration on hands/arms		< 0.5 m/s
Daily consumption **		10.81 l
Standards compliance		
This machine is in compliance with:		European directives: 2006/42/EC- Machinery (revised EN280:2013) - 2004/108/EC (EMC) - 2006/95/EC (Low voltage)

\*\* According to "REDUCE cycle"

# Load chart



## Dimensional drawing



## Equipment

### Standard

- 230V Predisposition
- 4 simultaneous movements
- 4 wheel drive
- 4 wheel steer with crab mode
- Audible alarm and illuminated indicator lamp (leveling, overload, lowering)
- Backup electrical pump
- Basket 2,300 mm
- CAN bus technology
- Continuous turret rotation
- Dead man pedal
- Differential locking on rear axle
- Easy Manager
- Emergency stop button in platform and on frame
- Engine on swivel chair
- Front axle with limited slip
- Fuel gauge with low level indicator
- Horn in the platform
- Hour meter
- Large basket with three entries
- Oscillating front axle
- Remote control for transport
- Telescopic jib

### Optional

- 110 or 230V plug with differential circuit breaker
- Additional storage boxes
- Air predisposition
- Basket 1,800 mm
- Battery cut-off
- Beep on every movement
- Beep upon travel
- Biodegradable oil
- Catalytic cleaner
- Coded anti-start
- Extreme cold oil
- Highly capacity battery
- Initial verification report before putting into service

## Optional

Lockable fuel cap

Non-marking tyres

Onboard generator (3,5 or 5 kW)

Personalized paintwork

SMS : Safe Man System

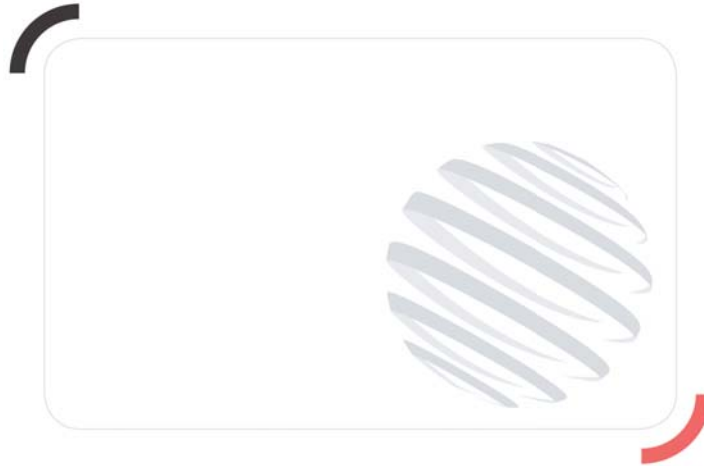
Safety harness

Screen protection on the lower box control

Spark arrester

Water heater

Working light



Siège Social  
430 rue de l'Aubinière - 44150 Ancenis Cedex - France  
Tel: +33(0)2 40 09 10 11 - Fax: +33 (0)2 40 09 10 97  
[www.manitou.com](http://www.manitou.com)



This brochure describes versions and configuration options for Manitou products which may be fitted with different equipment. The equipment described in this brochure may be standard, optional or not available depending on version. Manitou reserves the right to change the specifications shown and described at any time and without prior warning. The manufacturer is not liable for the specifications given. For more information, contact your Manitou dealer. Non-contractual document. Product descriptions may differ from actual products. List of specifications is not comprehensive. The logos and visual identity of the company are the property of Manitou and may not be used without authorisation. All rights reserved. The photos and diagrams contained in this brochure are provided for information only.

MANITOU BF SA - Limited company with board of directors - Share capital: 39,668,399 euros - 857 802 508  
RCS Nantes